



KT TABLES EQUIPMENT STAND

Job _____

Item# _____



STANDARD FEATURES

- All type 304 stainless steel construction with 1 ½" dia legs
- Four (4) adjustable flanged feet for securing to the floor
- Removable sliding drain pan, with nylon roller action guides
- Stationary drain connection
- Full width drain trough
- Factory assembled kettle stand combinations, either direct steam or electric kettles
- Various stand widths to accommodate multiple kettles

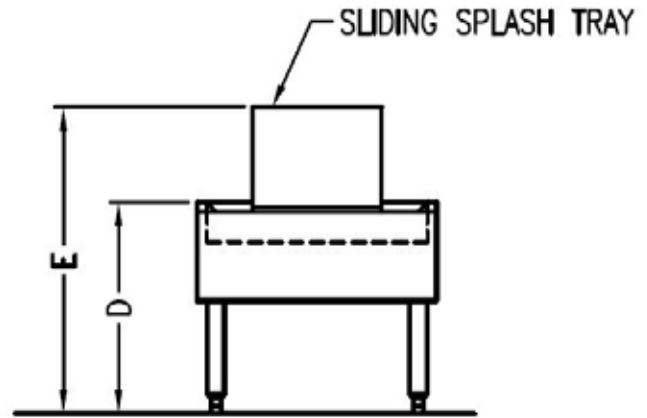
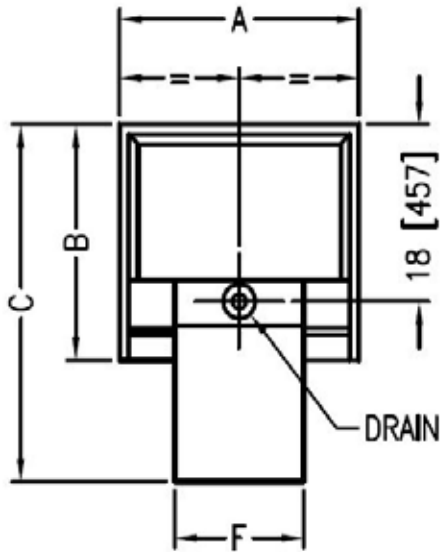
SPECIFICATIONS:

Shall be a Crown Model _____, table for mounting Crown counter top kettles. All type 304 #4 finish stainless steel construction and shall be equipped with movable stainless steel drain pan and splash guard. Table top has full width drain trough and 3.25 " (83mm) diameter perforated drain connection that can be piped or placed over a floor drain, and four (4) adjustable flanged feet for securing to the floor. Table will be 21.5" high (546mm) and 24" (610 mm) front to back.



Models: KT-26 KT-40 KT-50 KT-64 KT-80

MODEL	SHIPPING WEIGHT
KT-26	140 lbs. [63 kg]
KT-40	200 lbs. [91 kg]
KT-50	225 lbs. [102 kg]
KT-64	285 lbs. [129 kg]
KT-80	345 lbs. [156 kg]



MODEL	UNITS	A	B	C	D	E	F
KT-26	inches mm	26 (660)	24 (610)	36.375 (924)	21.5 (546)	32.25 (819)	14 (356)
KT-40	inches mm	40 (1016)	24 (610)	36.375 (924)	21.5 (546)	32.25 (819)	14 (356)
KT-50	inches mm	50 (1270)	24 (610)	36.375 (924)	21.5 (546)	32.25 (819)	14 (356)
KT-64	inches mm	64 (1626)	24 (610)	36.375 (924)	21.5 (546)	32.25 (819)	14 (356)
KT-80	inches mm	80 (2032)	24 (610)	36.375 (924)	21.5 (546)	32.25 (819)	14 (356)



70 Oakdale Road, Toronto ON, Canada M3N 1V9
(919) 762-1000 www.crownsteamgroup.com